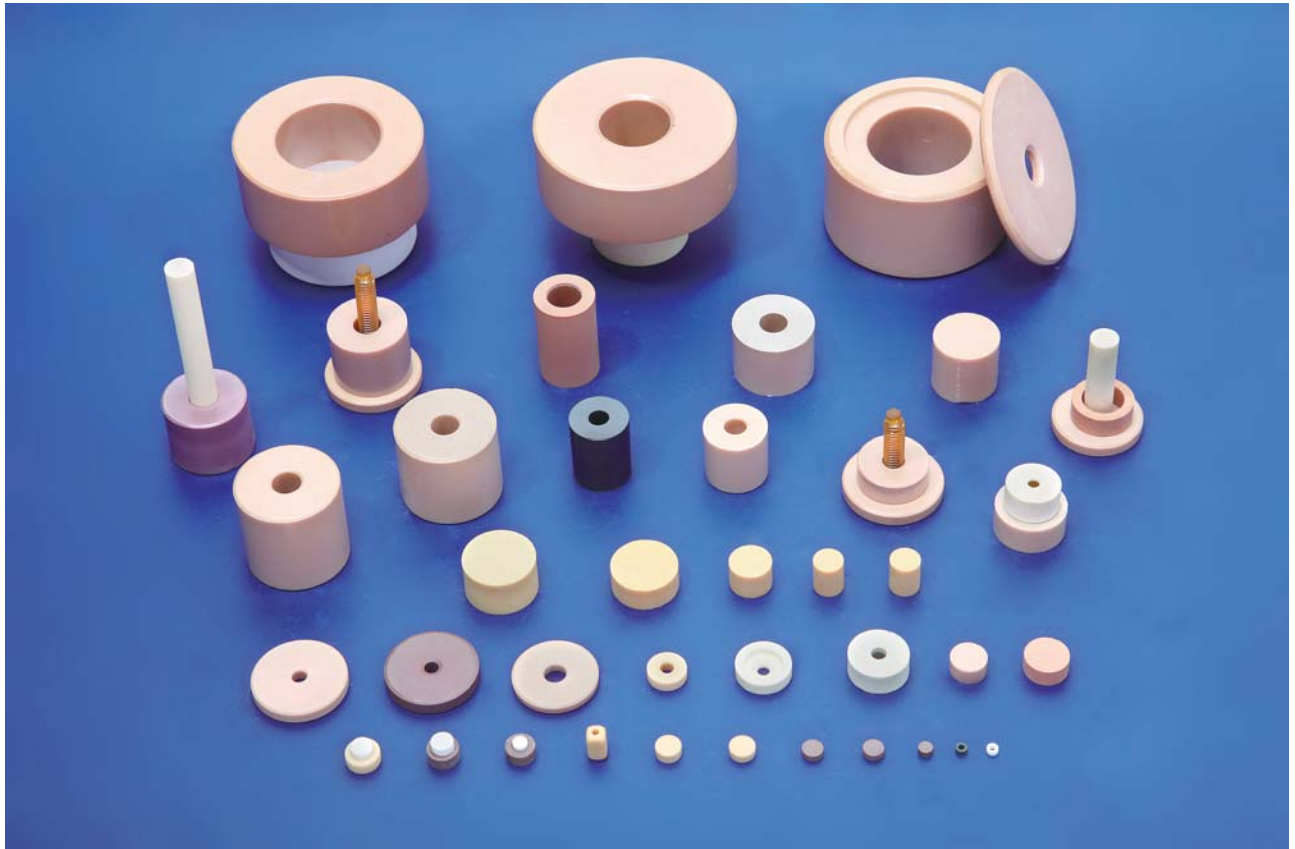
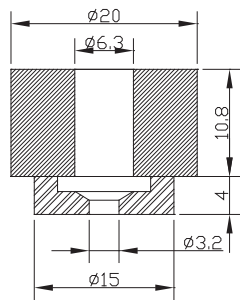


TE_{01δ}/TM Mode Dielectric Resonator

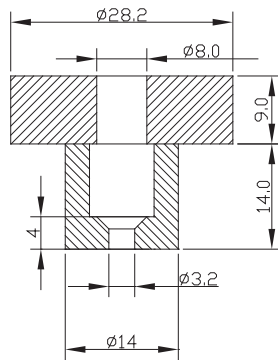
-For Dielectric Cavity Filter, Duplexer, Combiner used in Base Station.
-适用于基站用介质腔体滤波器、双工器、合路器。



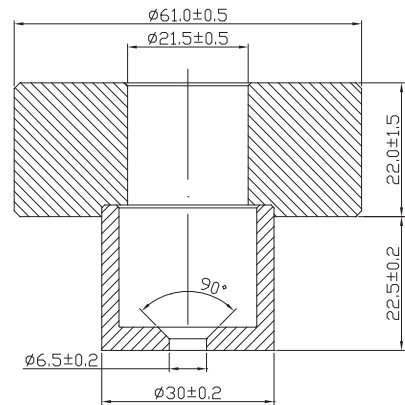
Dimension (尺寸) (Unit:mm)



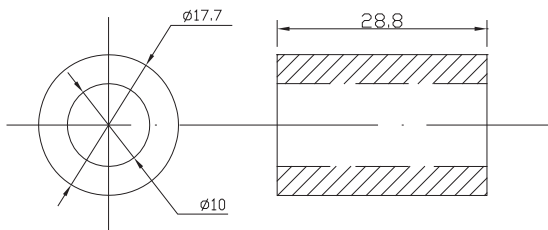
DRT-2000-0630-1.0-TE-A



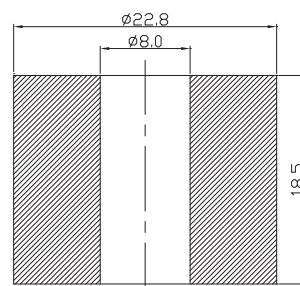
DRT-2820-0800-2.0-TE-A



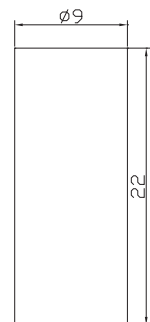
DRT-6100-2150-2.0-TE-A



DRT-1770-1000-0.7-TM-A



DRT-2280-0800-0.4-TM-A



DRT-0900-0.7-TM-A

TE_{01δ}/TM Mode Dielectric Resonator

-For Dielectric Cavity Filter, Duplexer, Combiner used in Base Station.
-适用于基站用介质腔体滤波器、双工器、合路器。

TE_{01δ} Mode Dielectric Resonator TE_{01δ} 模式介质谐振器

◆ Principal Parameters(主要参数)

Part No. 型号	Dielectric Constant 介电常数	Resonant Frequency 谐振频率 (MHz)	Temperature Coefficient 温度系数范围 (ppm/°C)	Unloaded Q value 无载Q值	Outer dimension 外径 (mm)	Inter dimension 内径 (mm)	Thickness 厚度 (mm)	Silver plated cavity size 镀银腔体尺寸 (mm)
DRT-5600-3100-2.0-TE-A	44-46	925-965	-6~+9	20000min.	56.0	31.0	27.0	100*100*70
DRT-6100-2159-2.5-TE-A	44-46	888	-6~+9	25000min.	61.0	21.59	23.0	108*108*70
DRT-6100-2159-1.7-TE-A	44-46	883	-6~+9	17000min.	61.0	21.59	25.0	85*85*63
DRT-2820-0800-2.0-TE-A	39-41	1980	-3~+9	20000min.	28.2	8.0	12.5	50*50*45
DRT-2000-0900-0.9-TE-A	44-46	2600	-6~+9	9000min.	20.0	9.0	9.5	Φ33*23
DRT-2000-0630-1.0-TE-A	39-41	2600	-3~+3	10000min.	20.0	6.3	10.8	30*30*26
DRT-3300-1000-1.2-TE-A	36-38	1800	-6~+6	12000min.	33.0	10.0	10.0	55*55*45
DRT-3460-1040-1.5-TE-A	44-46	1550	-6~+9	15000min.	34.6	10.4	13.0	47*47*35
DRT-2300-0800-1.5-TE-A	44-46	2300	-6~+9	15000min.	23.0	8.0	8.0	Φ50*45

Note:The data for reference only, Design it as customer's request.以上参数仅作参考，可根据用户要求设计。

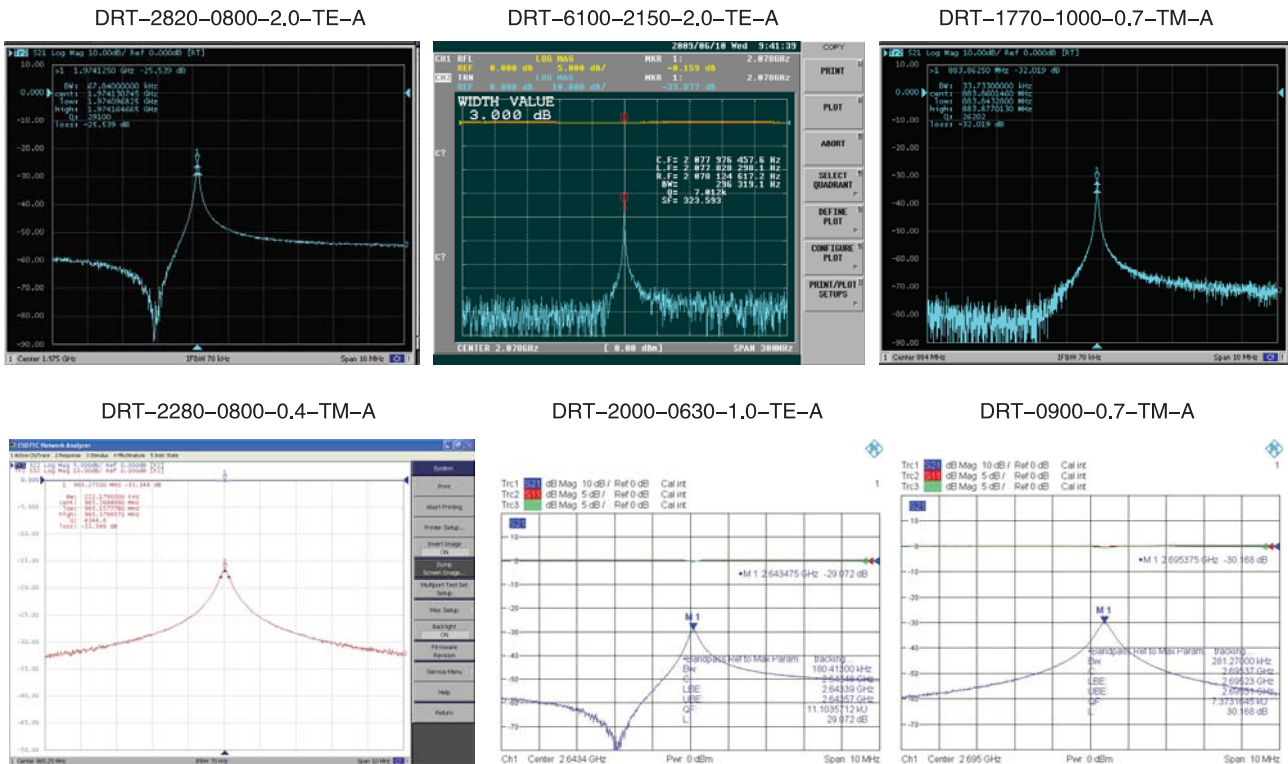
TM Mode Dielectric Resonator TM模式介质谐振器

◆ Principal Parameters(主要参数)

Part No. 型号	Dielectric Constant 介电常数	Resonant Frequency 谐振频率 (MHz)	Temperature Coefficient 温度系数范围 (ppm/°C)	Unloaded Q value 无载Q值	Outer dimension 外径 (mm)	Inter dimension 内径 (mm)	Thickness 厚度 (mm)	Silver plated cavity size 镀银腔体尺寸 (mm)
DRT-1600-0580-0.7-TM-A	35-37	2100	-3~+9	7000 min.	16.0	5.8	28.2	Φ35*38
DRT-1770-1000-0.7-TM-A	19-21	1900	-10~+10	7000 min.	17.7	10.0	28.2	Φ45*30
DRT-1700-1000-0.7-TM-A	44-46	2140	-6~+9	7000 min.	17.0	10.0	25.3	37*37*37
DRT-1200-0700-0.8-TM-A	44-46	2600	-6~+9	8000 min.	12.0	7.0	20.0	Φ35*25
DRT-3050-1050-0.4-TM-A	35-37	900	-3~+9	4000 min.	30.5	10.5	20.0	Φ45*30
DRT-2280-0800-0.4-TM-A	44-46	960	-6~+9	4000min.	22.8	8.0	18.5	Φ45*18.5
DRT-0900-0.7-TM-A	44-46	2600	-6~+9	7000min.	9.0	/	22.5	Φ30*30
DRT-1700-1000-0.6-TM-A	44-46	2300	-6~+9	6000min.	17.0	10.0	23.0	30*30*30

Note:The data for reference only, Design it as customer's request.以上参数仅作参考，可根据用户要求设计。

Typical Characteristic (波形特性)



TE_{01δ}/TM Mode Dielectric Resonator

-For Dielectric Cavity Filter, Duplexer, Combiner used in Base Station.
-适用于基站用介质腔体滤波器、双工器、合路器。

◆ FEATURES

- With High Q value and easy to control Tf.

◆ 特点

-具有高Q值和温度系数易控制的等特点。

Frequency(GHz)									
0.3	0.8	1.0	2.0	4.0	8.0	12	18	26.5	40
TE20 Series									
TE36 Series									
TE40 Series									
TE45 Series									
TE80 Series									
TE90 Series									
UHF	L-Band	S-Band	C-Band	X-Band	Ku-Band	K-Band	Ka-Band		

◆ Principal Parameters(主要参数)

Material Series 材料系列	Dielectric Constant 介电常数	Fo · Q(1/tan δ) Q值	Temperature Coefficient (ppm/°C) 温度系数范围	Insulation Resistance (Ω-cm) 绝缘阻抗	Application Frequency Range 频率范围	Application Range 适用范围
TE9.5	9~10	7,000@10GHz	-14~-4	>10 ¹⁴	Refer Frequency Chart 参照频率图	Refer Frequency Chart 参照频率图
TE20	19~21	5,000@10GHz	-10~+10	>10 ¹⁴		
TE21	20~22	7,000@10GHz	+2~+10	>10 ¹⁴		
TE36	35~37	10,000@4GHz	-6~+6	>10 ¹⁴		
TE40	39~41	18,000@4GHz	+2~+6	>10 ¹⁴		
TE45	44~46	10,000@4GHz	-10~+10	>10 ¹⁴		
TE50	49~51	4,600@5GHz	+5~+15	>10 ¹⁴		
TE65	64~66	3,000@4GHz	-2~+4	>10 ¹⁴		
TE80	79~81	8,000@1GHz	-2~+6.5	>10 ¹⁴		
TE90	89~91	7,000@1GHz	+10~+20	>10 ¹⁴		

Note: The data for reference only, Design it as customer's request. 以上参数仅作参考，可根据用户要求设计。

Method of Definition (命名方式)

DRT - □ - □ - □ - □ - □
① ② ③ ④ ⑤ ⑥

- | | |
|------------------------|---------|
| ① Dielectric Resonator | ① 介质谐振器 |
| ② Outer Dimension | ② 外径 |
| ③ Inter Dimension | ③ 内径 |
| ④ Q Value | ④ Q值 |
| ⑤ Mode | ⑤ 谐振模式 |
| ⑥ Versions | ⑥ 版本号 |

Operation instructions (使用说明)

TM模在焊装前一定要预热，而且焊装时的温度曲线要平缓，焊装后自然降温，不要加速降温，要注意避免局部快速高温或低温。
TE_{01δ}模以螺钉安装为主，如需胶水安装，需使用我司提供的特种胶水，并按规程操作。并且要保持腔体内干燥，调节频率一般采用介质调谐盘以保障Q值不受影响，而且注意调节螺杆的材质，以确保温飘的稳定性。
介质谐振器在装配密封前一定要进行充分的干燥。

TM Resonator must be preheated before the welding, and the temperature curve must be gentle during welding. Natural cooling after welding, do not speed up the cooling to avoid locally high or low speed.

The main way to install TE_{01δ} resonator is screw, if glue for installation, it must be used the special one provided by us, and according to operating instruction. And maintain the drying cavity. Adjusting frequency is generally used the dielectric tuning set to protect Q value is not affected, Pay attention to the adjust screw material, and ensure the stability of temperature drift.
Resonator must be fully drying before seal assembly.